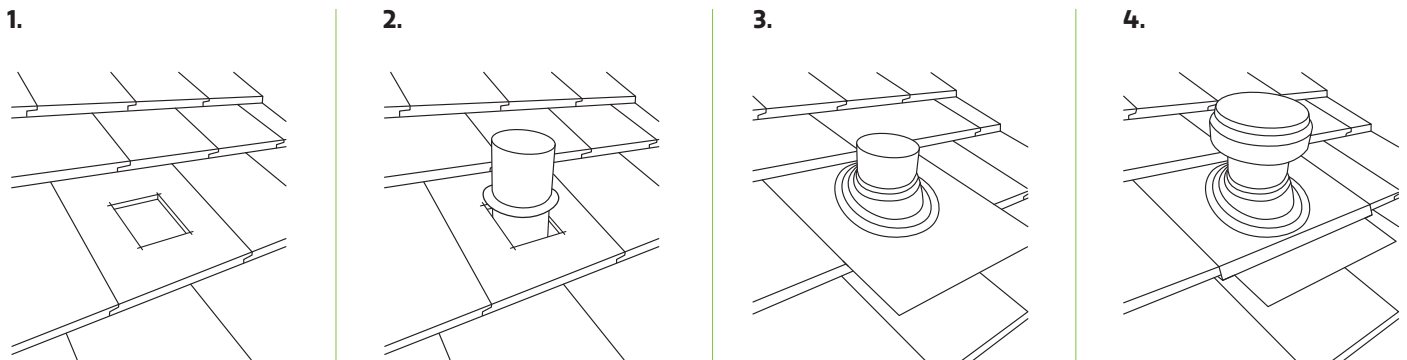


Instructions

Tiled Roof

1. Select a horizontal position along the ridge capping.
2. Remove a tile OR cut a 150 x 150mm square in a tile (figure 1) – ideally 2 to 3 tiles down from the ridge capping. Ensure position is between roof rafters and away from any electrical wiring or other hazards.
3. Cut away any permeable membrane in a cross and fold back.
4. Remove cowl from the pipe.
5. Take flashing (not supplied) and trim to tightly fit the pipe through the opening.
6. a.) If cutting the tile (preferred method), insert the pipe (Figure 2) with crimped end facing down and use an adhesive to adhere the ring to the tile.
b.) If removing a tile, we recommend bracing the pipe with a bracing strap (not supplied) or use timber struts to support the pipe between the rafters as it is placed (with flashing) over the opening.
7. Install flashing as per manufacturer's instructions. We recommend the use of silicone to adhere flashing to tiles unless flashing contains an adhesive. (Figure 3)
8. Use a silicone sealant to seal the flashing around the pipe.
9. Use an adhesive or rivets to secure the cowl to the pipe. (Figure 4)
10. Enter the roof cavity and connect ducting to the crimped end with clamps and/or duct tape (this step can be done earlier if prepared)
11. From inside the roof cavity, duct tape the permeable membrane to the neck.
12. Connect other end of ducting to exhaust fan or rangehood.

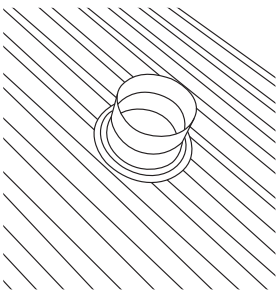


Instructions

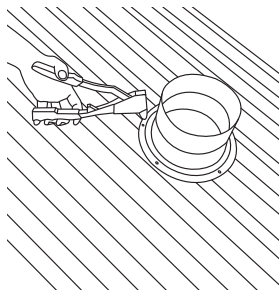
Metal Roof

1. Identify a position on the roof clear of obstructions and wiring
2. Cut an (approx.) 155mm round hole using the pipe to mark out the hole
3. Cut away any permeable membrane in a cross and fold back
4. Remove the cowl from the pipe and insert the pipe into the hole (Figure 1)
5. Screw the flange to the roof (Figure 2)
6. Take flashing (not supplied) and trim to tightly fit the pipe through the opening
7. Install flashing as per manufacturer's instructions. (Figure 3)
8. Use a silicone sealant to seal the flashing around the pipe
9. Use an adhesive or rivets to secure the cowl to the pipe. (Figure 4)
10. Enter the roof cavity and connect ducting to the crimped end with clamps and/or duct tape (this step can be done earlier if prepared)
11. From inside the roof cavity, duct tape the permeable membrane to the neck.
12. Connect other end of ducting to exhaust fan or rangehood.

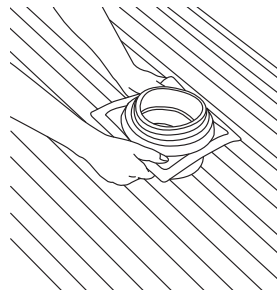
1.



2.



3.



4.

