

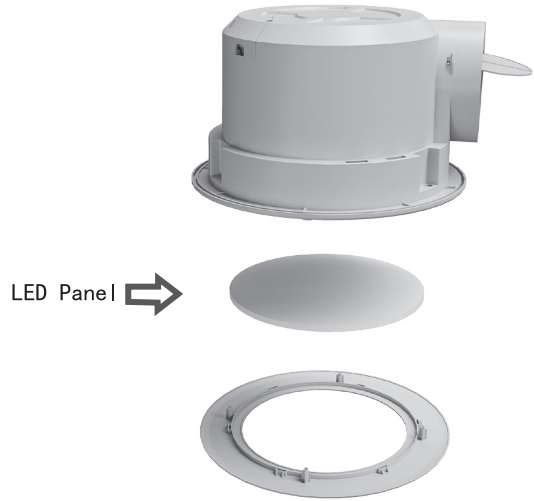
Operation & Maintenance

Warranty Condition

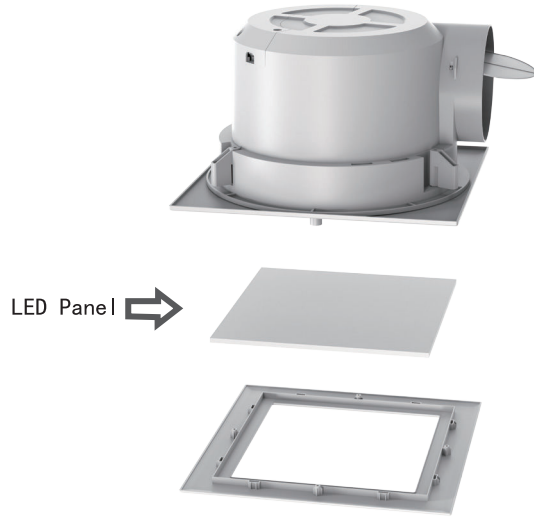
Warranty Card

- The LED panel is replaceable and can be purchased separately. (for Light Models Only)
- Replacements must be done by a qualified trades person.

model 206174N / 206176N



model 206814N / 206816N



- This warranty is for products originally purchased in and installed in Australia ONLY.
- Installation must be performed by a qualified and licensed electrician. The warranty will not apply if the product is installed by anyone other than a qualified and licensed electrician.
- Problems arising from incorrect installation are not covered by warranty.
- The cost of repairs and/or service call arising from incorrect installation, not due to faulty material or workmanship in accordance with the EGLO warranty, will be payable by the purchaser.
- This warranty is only valid for appliances used according to the manufacturer's instructions.
- The manufacturer does not accept liability for any direct or consequential damage, loss or other expense arising from misuse or incorrect installation and operation of the appliance.
- Warranty will only be provided where proof of qualified electrical installation is provided. Eg. Electrical Safety Certificate.
- Warranty will not be provided if any part of the product is altered or changed.
- The manufacturer will not accept any claim expenses unless authorisation is granted prior to work commencing, and a Warranty Claim Number allocated by EGLO.
- Where a service call is undertaken and no fault is found with the product, or where the fault is not covered under the terms of this warranty, a call-out fee may be charged.

HOW TO MAKE A WARRANTY CLAIM:

For all warranty enquiries, please phone the EGLO Customer Care hotline directly on 1800 254 448, or email a completed claim form to [warranty@eglolighting.com.au](mailto:warranty@eglolighting.com.au), along with proof of purchase & proof of electrical installation (including electrical contractor license number).

Do not uninstall or return the product to the retailer, unless advised to do so by an EGLO customer service representative.

To help us assist you with your claim, please complete the enclosed warranty card and email to our office.

Customer Details	
Name	
Address	
Phone/Mobile	
Email	

Proof of Purchase	
Store Name	
Item/Model #	
Receipt	

Installer Details	
Business Name	
Installer name	
License #	
Phone/Mobile	

Fault Description	

Please email this form, together with copy of your purchase receipt & electricians' invoice to:  
EGLO LIGHTING AUSTRALIA  
[warranty@eglolighting.com.au](mailto:warranty@eglolighting.com.au)  
For assistance with your claim please phone:  
1800 254 448



AIR MOVEMENT

Installation Manual and Warranty

SAMBA Series  
Bathroom Exhaust



206174N  
206176N

206175N  
206177N



206814N  
206816N

206815N  
206817N

\*(All images and illustrations in this manual are reference only)

## Read Me

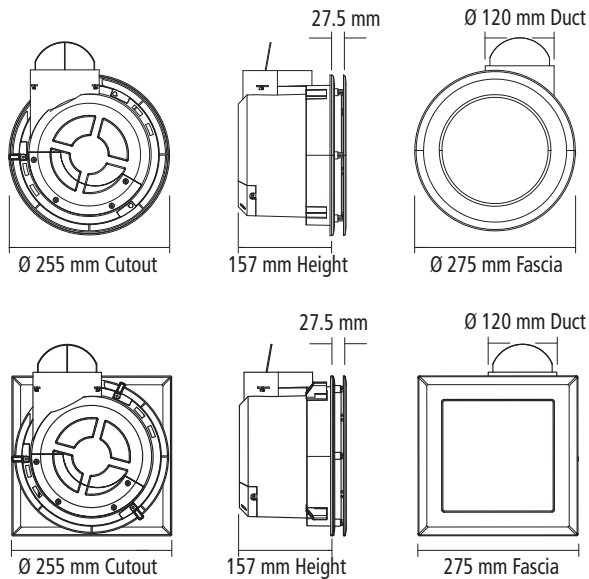
Congratulations on your purchase of the EGLO SAMBA exhaust fan. Please take your time to go through all the instructions before commencing installation.

**IMPORTANT NOTE:** All electrical work must be carried out by a qualified electrician and installed in accordance with AS/NZS3000.

## Safety Notes

- This product is not intended for use by persons (including children) with reduced physical, sensory, or mental capabilities, or lack of experience and knowledge, unless they have been given supervision or instruction concerning the use of the appliance by a person responsible for their safety.
- This product is fitted with a plug and cord, however, all interconnecting wiring, socket and switches above the ceiling that are not included must be installed by a licensed electrician.
- This product is intended to be installed on the ceiling or roof cavity only and should be installed by a qualified trades person.
- If the supply cord is damaged, it must be replaced by a licensed electrician.

## Dimensions



## Selection

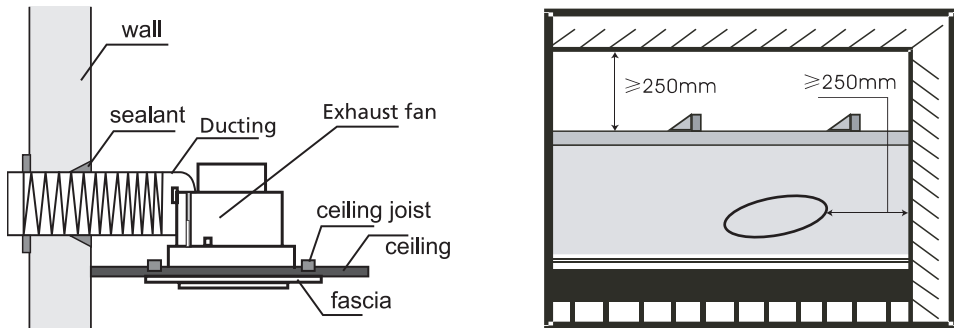
Model#	Rated Voltage	Motor	Airflow	CCT	LED	Cut-out	Duct Size	Noise
206176N 206174N 206814N 206816N	220 – 240 V~ 50 Hz	50 W	300 m³/h	3 000 K / 4 000 K / 5 000 K	10 W	Ø 255 mm	Ø 120 mm	43 dB(A)
206175N 206177N 206815N 206817N	220 – 240 V~ 50 Hz	50 W	300 m³/h	NA	NA	Ø 255 mm	Ø 120 mm	43 dB(A)

Example of exhaust fan selection:

	Room Volume = L x H x W			Volume m³
	Length (m)	Height (m)	Width (m)	
	2	2.5	2	
	Air Movement = Volume x Recommended Air Change/hr			
	Room Volume m³	Air Change/hr	Required Air Movement	
Bathroom	10	15-25	150-250m³/hr	
Laundry	10	15-25	150-250m³/hr	
Toilet (Only)	5	10-15	50-150m³/hr	

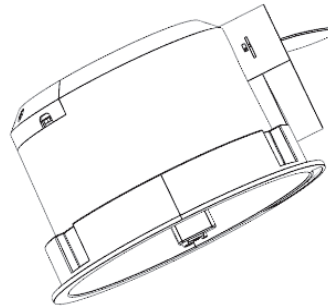
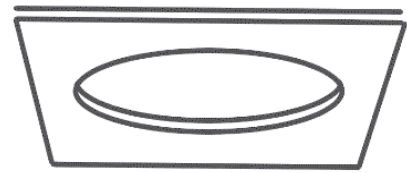
## Location

- Do not install this product directly above the shower or bathtub.
- Ensure there is a minimum clearance of 250mm from surrounding walls or similar structures.
- Allow a height of 2.1m from floor to ceiling and a clearance of 50mm above the unit after installed.
- Joists, beams and rafters must not be cut or notched or damaged in the installation of this product.
- Ensure there are no obstructions/restrictions to the output of the air vent.



## Installation

Please ensure to turn off the power before installation.



206176N  
206174N  
206175N  
206177N



206814N  
206816N  
206815N  
206817N

1. Use the template provided and mark the cutout area with a pencil.



2. Cut the hole carefully with a saw.



3. Plug the unit into a pre-installed socket.
4. Carefully tilt and align the unit into the cutout.
5. Turn the locking tabs out with a screwdriver and tighten firmly.



6. Install the fascia. (for fascia with light, find and connect the cable with the CCT switch and select colour temp before installation, for light Models Only)

## Operation & Maintenance

- For the extraction to work effectively, replacement air of a volume equivalent to what is being extracted must be able to enter the room. If the room is airtight, the exhaust will not be effective.
- Ensure air flow through the fascia openings are not blocked.
- Ensure the ducting is not blocked.

